



2016 ANNUAL
REPORT
BEE CAVE
POLICE
DEPARTMENT
Service

Justice

Fairness

Nobility

Guardians

INSIDE THIS REPORT

Chief's Message	1
Organizational Chart	2
Administration & Police Officers	3-8
Awards & Recognition	9-10
Community Involvement	11-13
Statistics	14-20





Chief's Message

As we reflect on this past year, we have many reasons to be thankful for the opportunity to be guardians of the Bee Cave Community. Although 2016 was a challenging and difficult year for many police departments across America, we continued to enjoy community support and involvement and look forward to strengthening that support in years ahead.

President Obama created the Presidents Task Force on 21st Century Policing in 2015, and in their final report the Task Force recommended police departments implement “procedural justice,” specifically by adopting these principles:

1. Treating people with dignity and respect;
2. Giving individuals “voice” during encounters with police;
3. Being neutral and transparent in decision making;
4. Conveying trustworthy motives.

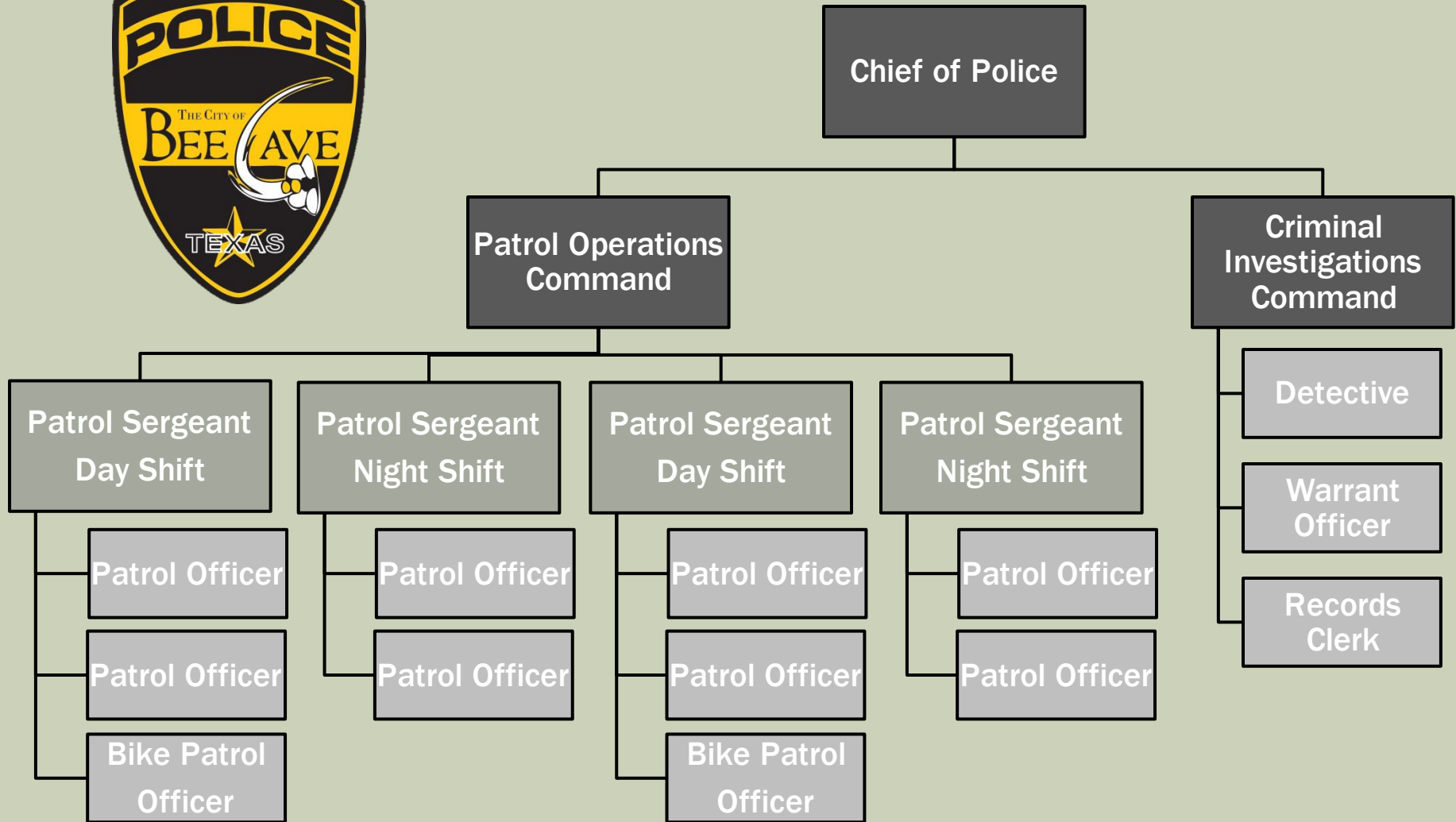
As a department we fully support these principles and believe the community support we receive in return helps make us successful and this community stronger.

The following pages contain statistics and highlights of events which occurred in 2016. Bee Cave continues to grow and the Bee Cave Police Department also grew last year. We added two officers whose primary duties are bike patrol in the larger retail areas of the city. These are higher call volume locations and having officers assigned to those areas allows other officers on patrol additional preventiv e and targeted patrol time.

Hiring officers who are a good fit for Bee Cave is a priority, and we are proud of the new officers added this year and those who have “Protected the Hive” for many years.

We welcome citizen involvement and input and encourage you to visit our Facebook page, web page, give us a call or sign up for our next Citizens Police Academy. Together we will continue to make Bee Cave the best it can be.

Chief Gary Miller



Chief Gary Miller



Lt. Vicente Montez
Patrol Operations

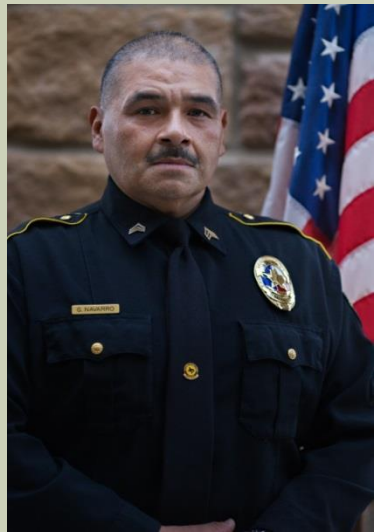




Senior Officer John Paul Meiners
Warrant Officer/ Evidence Custodian
Recognition Program Manager

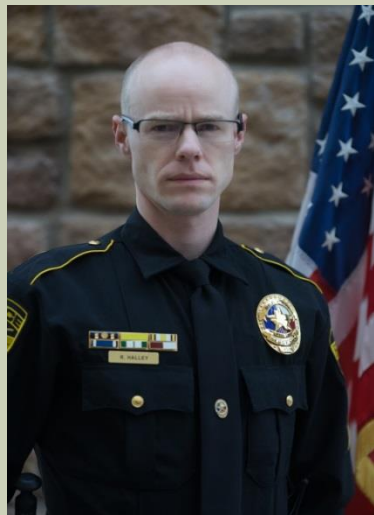
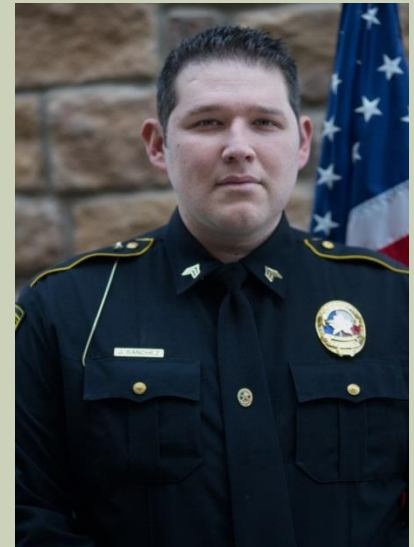


Detective Joe Reid
Officer of the Year 2015



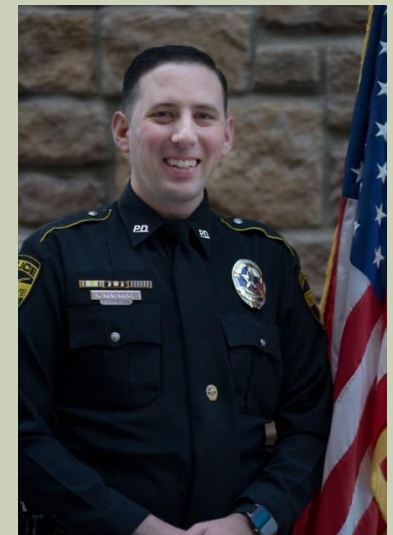
Sgt. Guadalupe Navarro
Field Training Coordinator

Sgt. Joseph Sanchez
Drug Recognition Expert
SFST Instructor
Advanced Accident Inv.



Sgt. Ryan Halley
Coopers Institute/Texas D.P.S.
Fitness Instructor

Sgt. Kevin Hendricks
SFST Instructor





Officer Dwayne Shaw



Senior Officer Gabriel Flores





Stephen Moring
Firearms Instructor
Armorer – AR15
Shotgun



Keith Howard
Firearms Instructor
Armorer – Glock & Shotgun



Eric Cuevas
Senior Officer



Officer Scott Olson



Officer Alex Martinez



Officer Scott Rosenbaum



Officer Carin Vos



OFFICER OF THE YEAR 2016



Officer Stephen Moring

MOTHERS AGAINST DRUNK DRIVERS AWARDS



Sgt. Joseph Sanchez
Commitment Hero Award
M.A.D.D. 2016

Senior Officer Kevin Hendricks
Enforcement Hero Award
M.A.D.D. 2016



**Combined Color Guard Bee Cave Police Department and Lakeway Police
Department at Veteran's Day Ceremony Lake Travis High School**

(Officer Keith Howard – far left / Sgt. Ryan Halley far right)

The Rotary Club
of Lakeway/Lake Travis
Meeting Room



Chief Miller with Lake Travis Young Men's Service League

2016 Highlights



Bee Cave Police & Lake Travis Fire Rescue
911 Stair Climb Event on
September 11, 2016

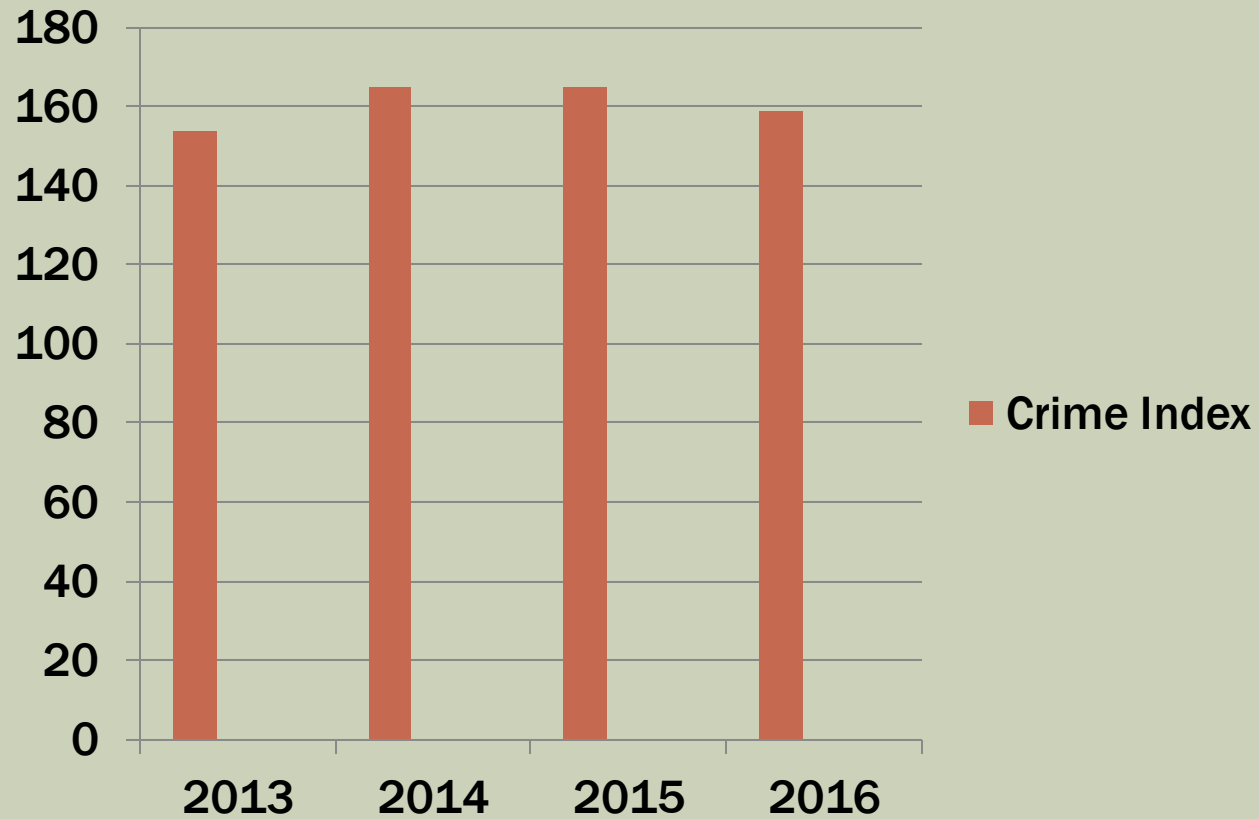


Lake Travis High School Football
Send Off at The Hill Country
Galleria - The State Championship
Went Through Bee Cave



Bee Cave Citizens Police Academy
Class #002
2016

CRIME INDEX



The Crime Index is the total number of Homicide, Robbery, Aggravated Assault, Burglary of Residence Or Building, Theft, Auto Theft and Arson.

OFFENSES BY TYPE AND YEAR

	2011	2012	2013	2014	2015	2016
Assault	29	31	25	22	30	23
Burglary	28	17	7	9	6	15
Burglary of a Vehicle	18	27	36	33	35	15
Criminal Mischief	19	22	35	30	22	29
Drug Offenses	56	38	54	56	155	148
Forgery - ID Theft	12	5	8	2	24	37
Robbery	0	0	0	0	0	2
Theft	112	92	102	116	134	104
Intoxication Offenses	60	42	40	53	171	152
Unauthorized Use MV	2	9	6	8	7	8

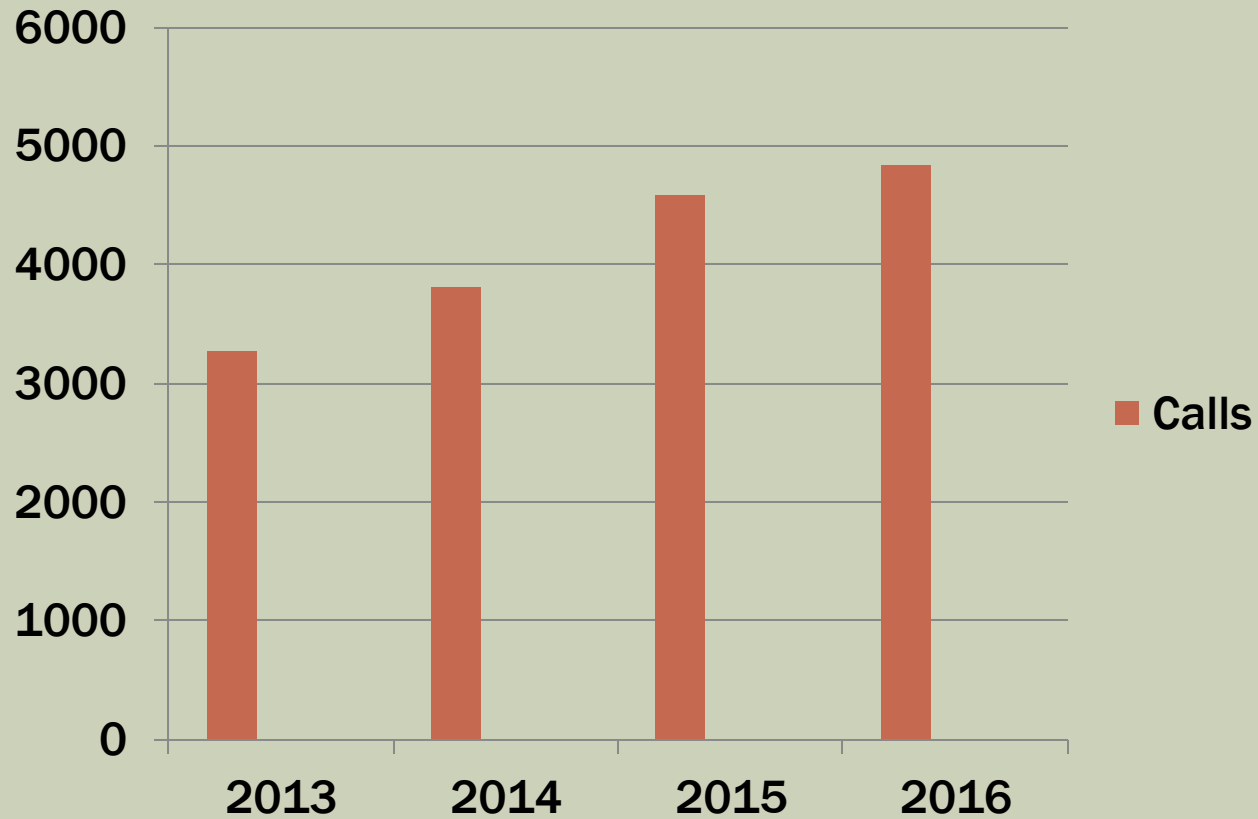
The increase in Drug Offenses and Intoxication Offenses in 2015/16 is attributed to increased traffic enforcement during that time frame.

BY THE NUMBERS

	2015	2016
CALLS FOR SERVICE	4591	4834
TRAFFIC STOPS	6176	8793
CITATIONS	3921	4202
WARNINGS	3887	4731
ARRESTS	430	563
MOTOR VEHICLE CRASHES	240*	217**

- *5% increase over last year in calls for service.*
- *Citations are up 7%*
- *Arrests are up 30%*
- **Includes one motor vehicle-pedestrian fatality*
- *** Includes one motor vehicle fatality*

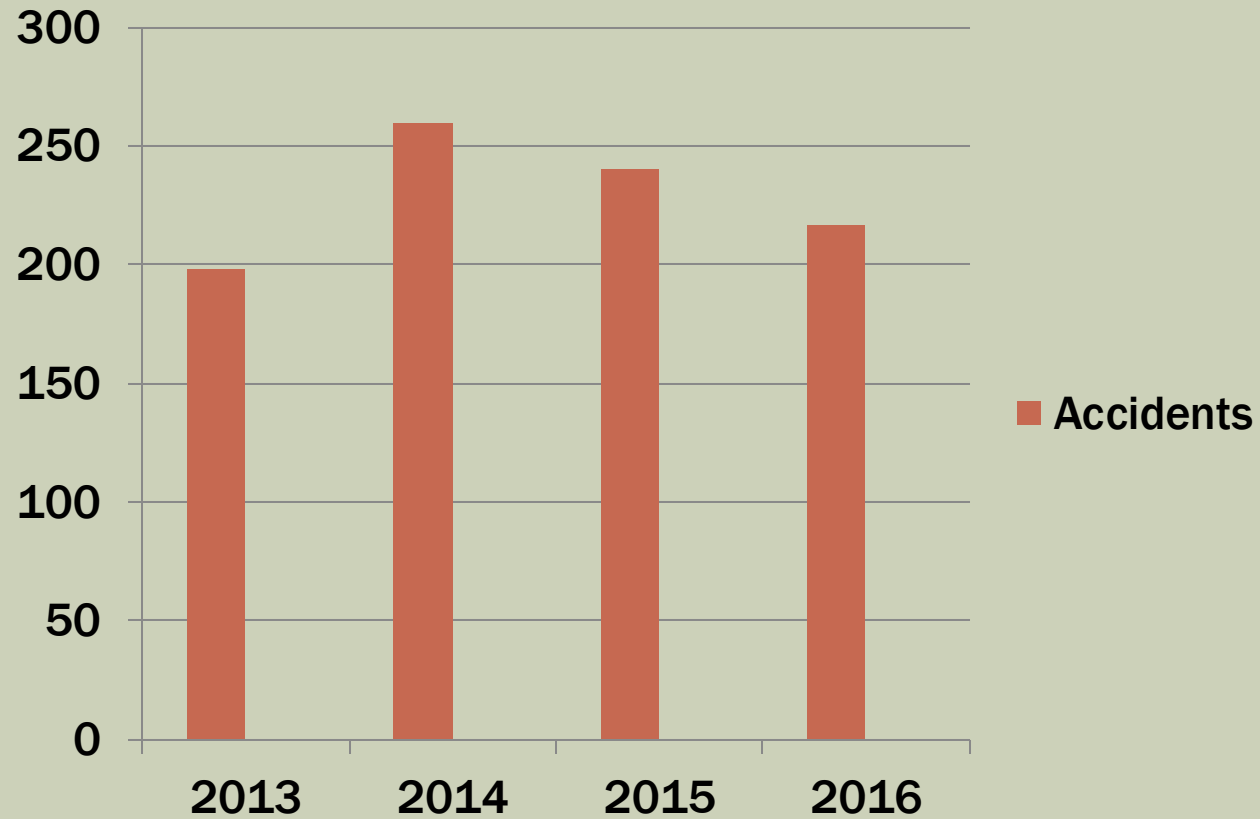
CALLS FOR SERVICE



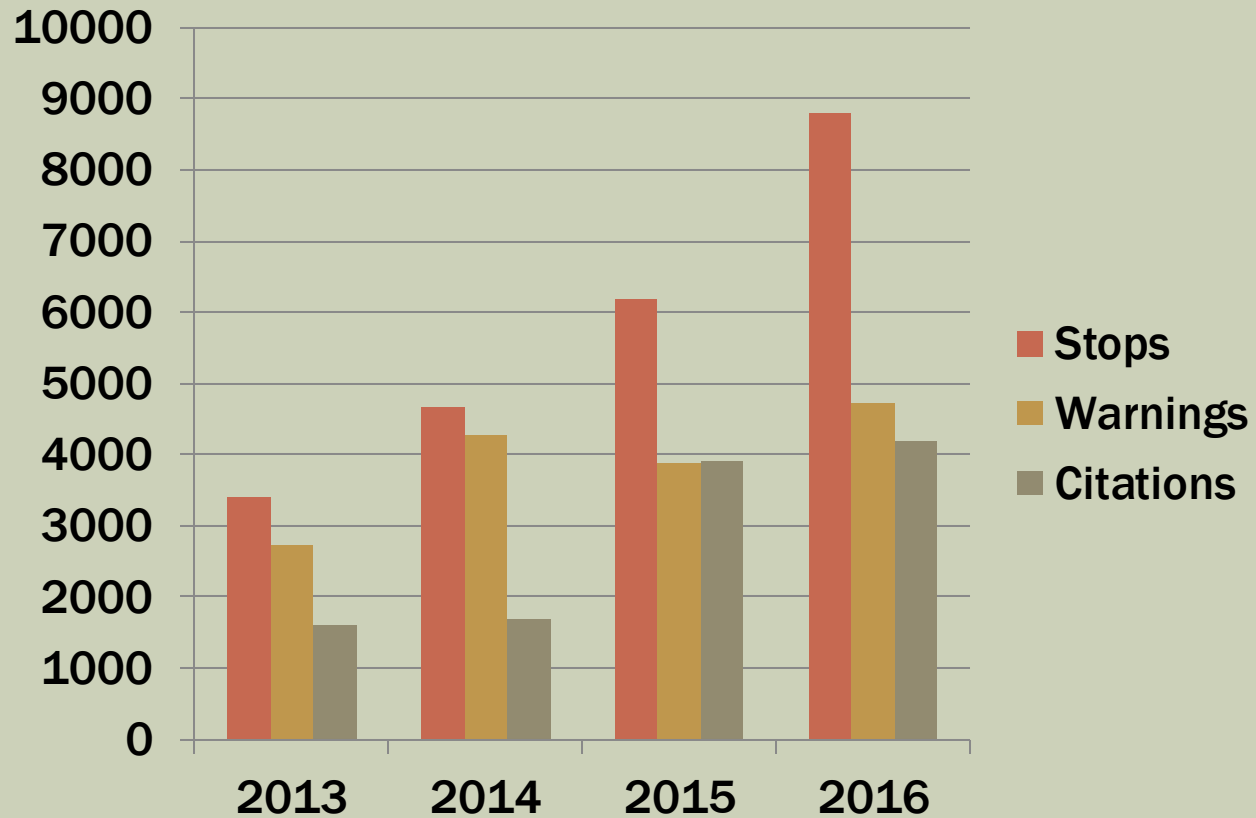
48% Increase from 2013 - 2016

5% Increase from 2015 - 2016

MOTOR VEHICLE ACCIDENTS



TRAFFIC ENFORCEMENT



159% Increase in Traffic Stops from 2013 – 2016
17% Decrease in Motor Vehicle Accidents from 2014 - 2016



PROTECTING THE HIVE SINCE 2005